

# Welcome

Syfr-ESRI School District Seminar

Redlands, CA

December 9, 2009

Your ESRI hosts:

George Dailey, [gdailey@esri.com](mailto:gdailey@esri.com)

Charlie Fitzpatrick, [cfitzpatrick@esri.com](mailto:cfitzpatrick@esri.com)



Home Display Tools Appearance Add-Ins

Start Presentation Edit Presentation Presentation

Find Find

Directions Route Measure

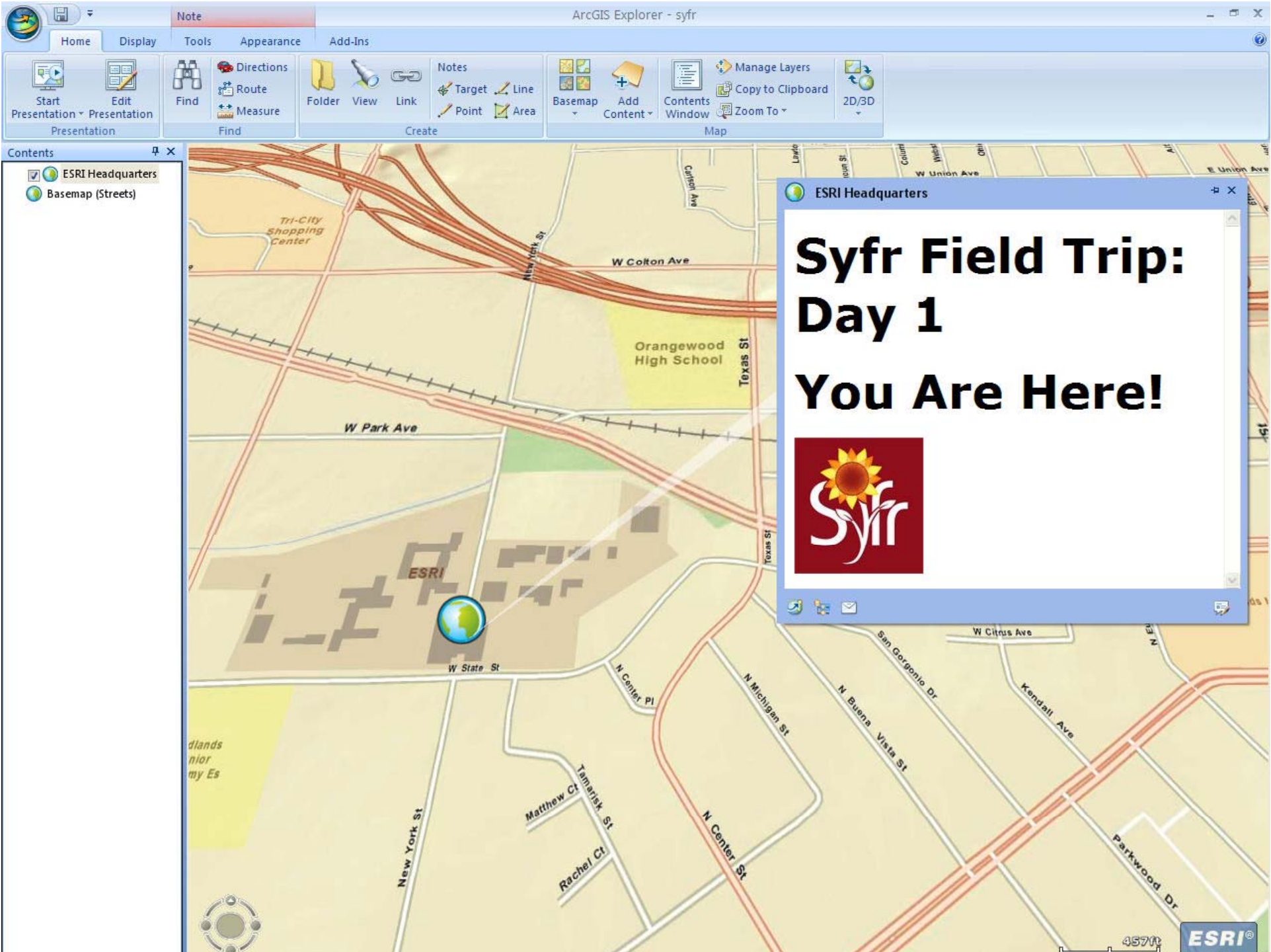
Folder View Link

Notes Target Line Point Area

Basemap Add Content Contents Window Map

Manage Layers Copy to Clipboard Zoom To 2D/3D





# Syfr Field Trip: Day 1 You Are Here!



# Agenda (1)

Ask questions, explore the contents of your tote bag

- 8:45-9:30**
  - Welcome, Introductions
  - ESRI: Where geography matters
  - GIS, careers, and our future
  
- 9:30-10:00**
  - GIS in education: More than a map—Discovery learning, decision support (Gov. Jim Geringer)
  - Open discussion
  
- 10:00-10:15**
  - Break (Explore the literature tables)
  
- 10:15-10:40**
  - Geographic thinking exercise: Building a dam
  
- 10:40-11:30**
  - GIS in education, in schools
    - ESRI vision of education, EdTeam
    - GIS in classrooms: Advancing student success
    - Open discussion

## Agenda (2)

- 11:30-12:45** - Lunch (ESRI Café, make a new acquaintance)
- 12:45-1:10** - Demo: Seasonal differences (Mapping Our World)  
- Demo: Mapping earthquakes w/ArcGIS Explorer
- 1:00-1:50** - GIS in school administration: Overview and best practice examples  
- Demo: Natl Center for Ed Stats: MapViewer
- 1:50-2:00** - Stretch
- 2:00-2:20** - Where do you go from here: Exploration of ESRI resources, programs, and events
- 2:20-2:45** - Synthesis discussion: Questions & learning
- 2:45-3:00** - ESRI: Change, Innovation, Creation (Clint Brown)
- 3:00-4:20** - Gather materials, last exploration of lit. tables  
- Reception and networking (ESRI Café)

## Who's here?

- **Syfr participants: CA, GA, IL, KS, TX, WY**
- **ESRI staff: Senior staff, EdTeam, EdServices, and Regional Office colleagues**
- **ESRI partners/friends: Representing academic instruction, CTE, PD, demographic planning, school transportation, fleet routing, Web mapping, and GIS-IT services**
- **See <http://edcommunity.esri.com/syfr> for more on ESRI partners and a range of resources**

# Why are you here?

...because of an ESRI GIS user...Dick Erdmann's son

