



Esri International User Conference | San Diego, CA  
Technical Workshops | July 15, 2011

# ArcGIS for Local Government: An Introduction

Scott Oppmann  
Lindsay Thomas



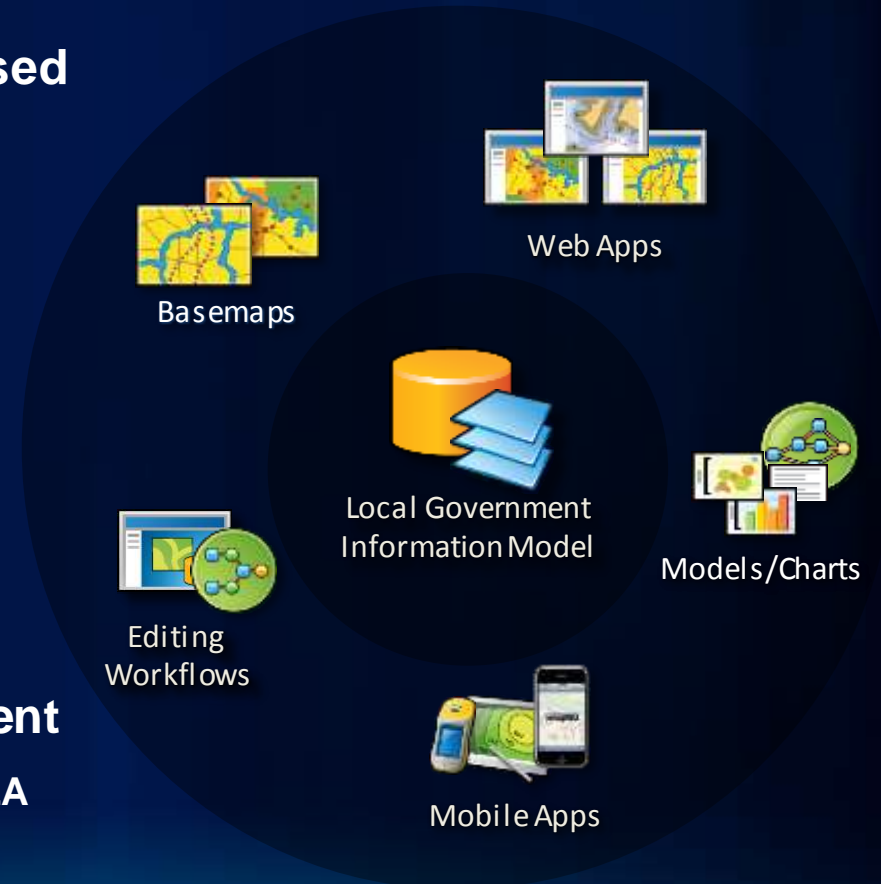
# Agenda

- **Introduction**
- **The Local Government Community**
- **Local Government Maps and Apps**
- **ArcGIS for Local Government System**
- **What's Next**
- **Your Feedback**

# ArcGIS for Local Government

*A product for Esri's local government customers*

- **A series of useful maps and apps focused on local government work**
  - Organized into modules
  - Extensible, configurable
  - A foundation for Partner solutions
- **Participation in the online community**
  - Best Practices / Implementation Support
- **Esri Services and Partner offerings**
  - Help implement, sustain and enhance
- **One ArcGIS product for local government**
  - Freely available for individual customer and ELA engagements



*.....available on-premise or in the cloud*

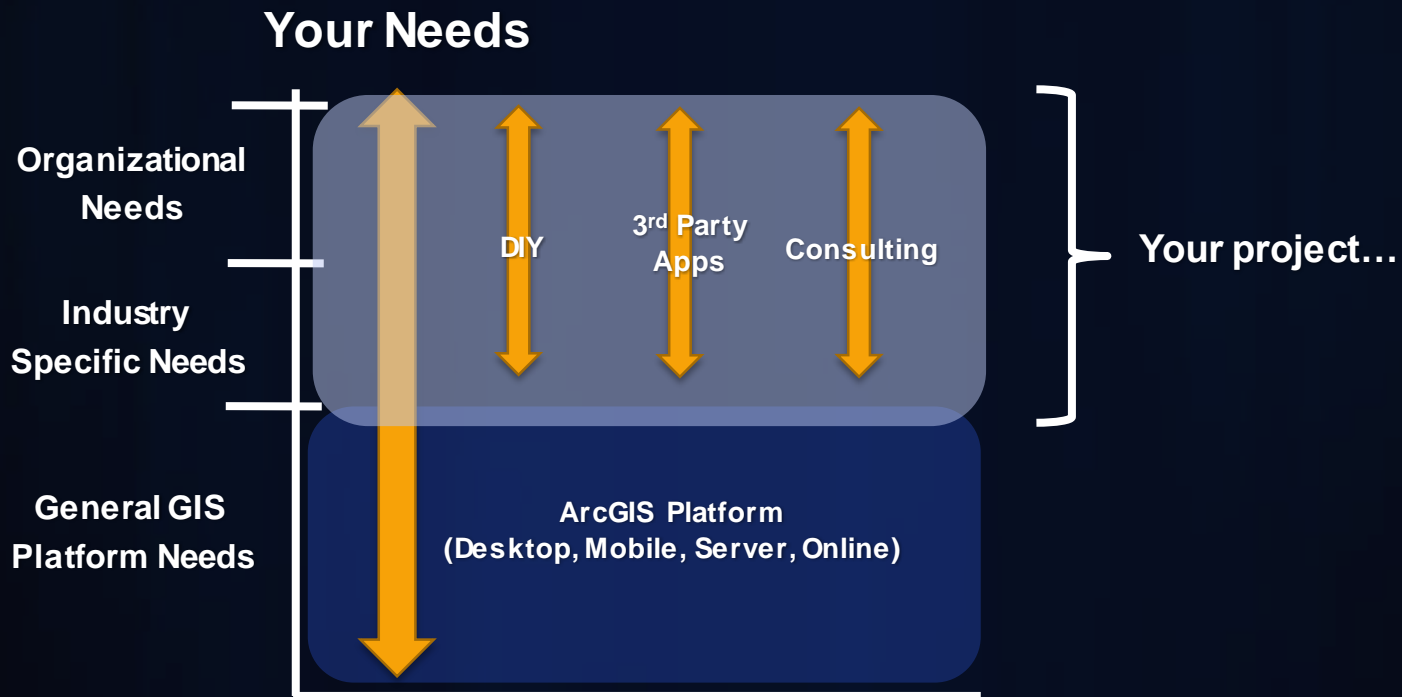
# Our Mission

*Help you increase the value of GIS in your organization*

- **Make it easier to deploy ArcGIS**
  - **Deliver applications quickly throughout your organization**
  - **Stay current with future releases / avoid legacy technology**
  - **Create a platform of geospatial data that can be leveraged by many**
- **Address common constraints in local government**
  - **Size and skills of staff**
  - **Budget and time available to implement**
- **Empower the community to contribute**
  - **Users**
  - **Partners**

# ArcGIS for Local Government

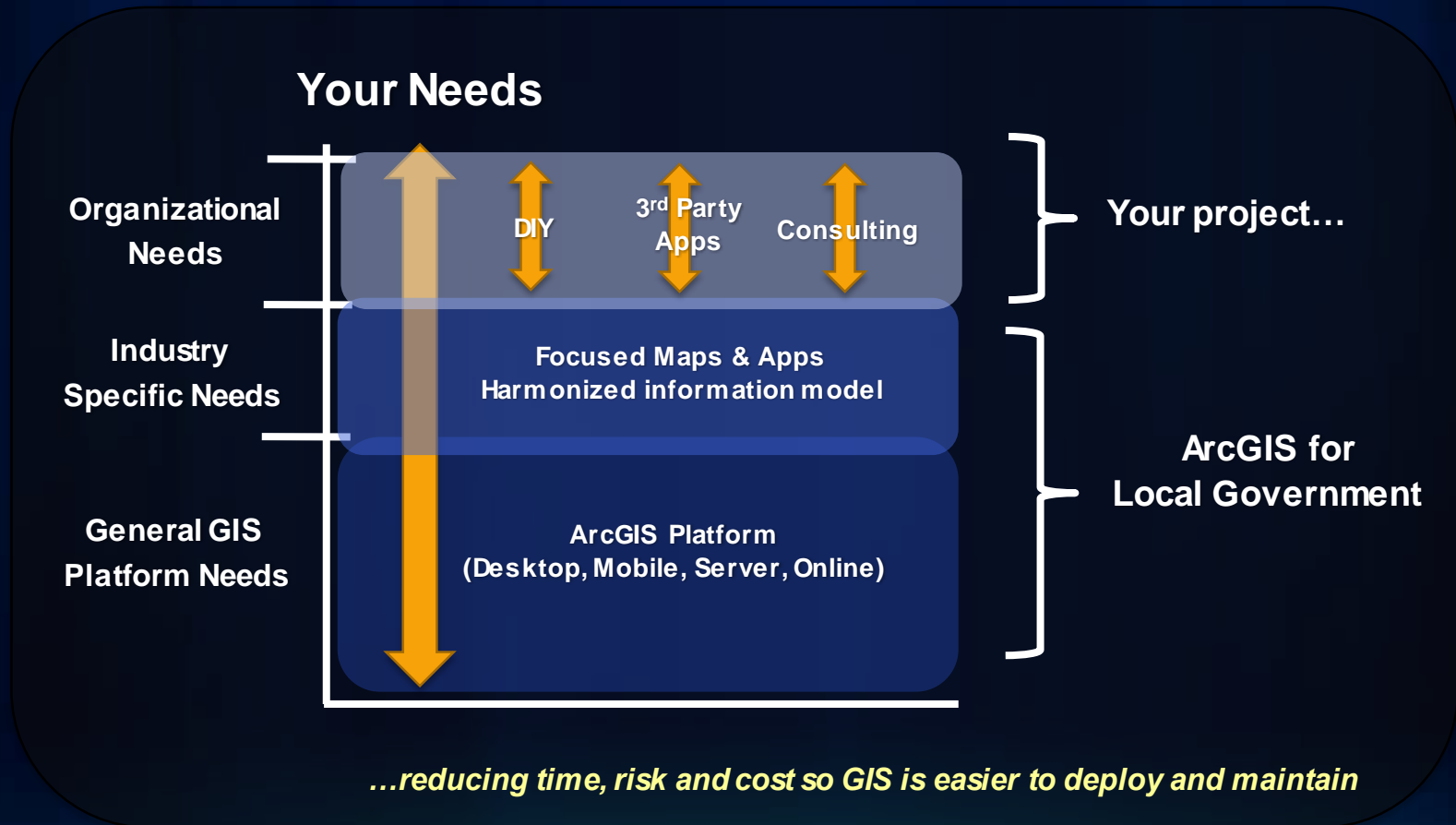
*Changing the way you deploy GIS*



*...traditional GIS approaches no longer viable....slow, risky and expensive*

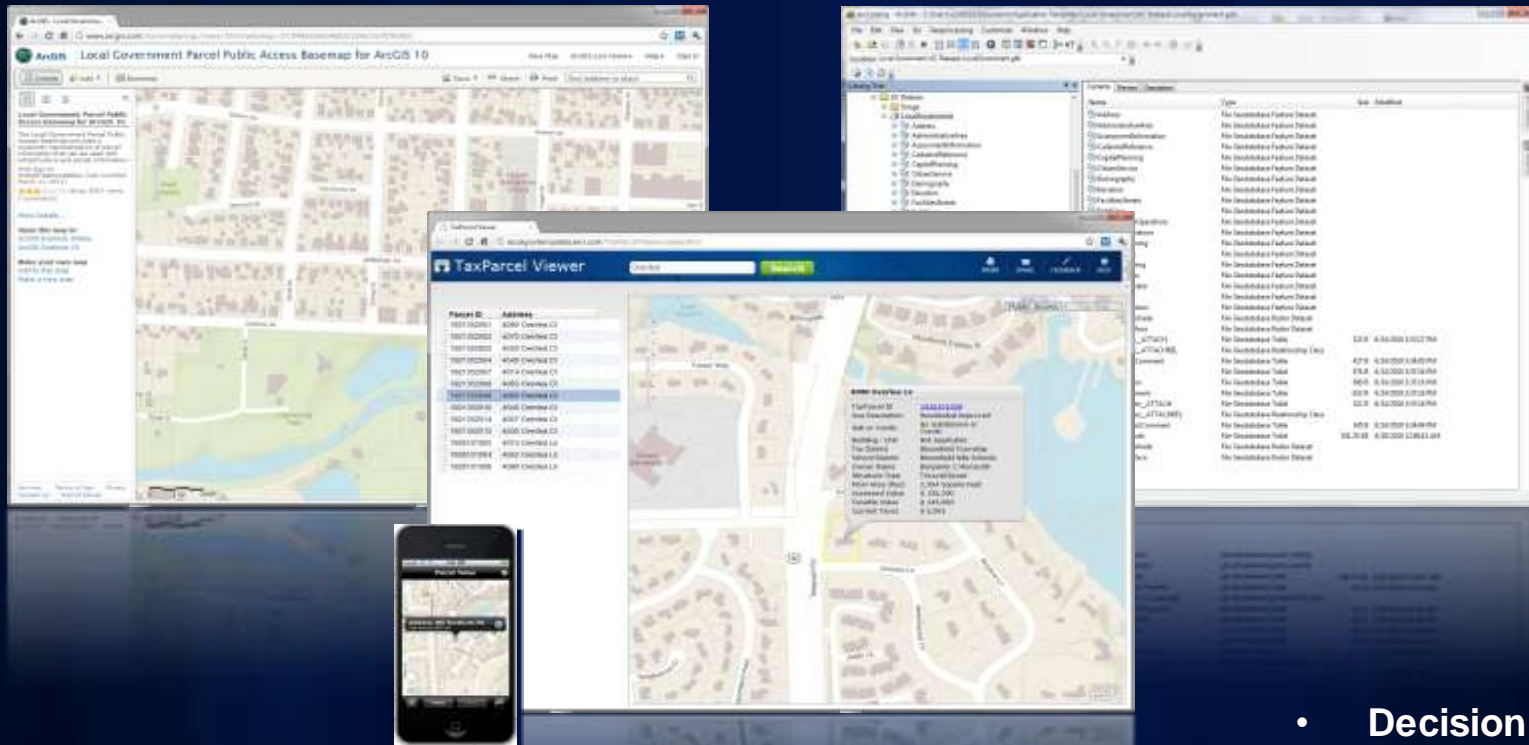
# ArcGIS for Local Government

*Changing the way you deploy GIS*



# ArcGIS for Local Government

*Empowering a local government through a common ArcGIS system*



- Decision making
- Transparency
- Accountability
- Communication
- Planning

*....desktop, web and mobile apps with meaningful maps and layers supported by single information model*

# Five Common Business Patterns

Asset  
Management

Planning &  
Analysis

Field  
Mobility

Operational  
Awareness

Citizen  
Engagement

*Land Records, Public Safety, Planning, Public Works, Utilities. . .*

Managing and  
distributing authoritative  
GIS data

Transforming data  
into actionable  
information

Getting information  
into and out of the  
field

Providing information  
on the health of an  
organization

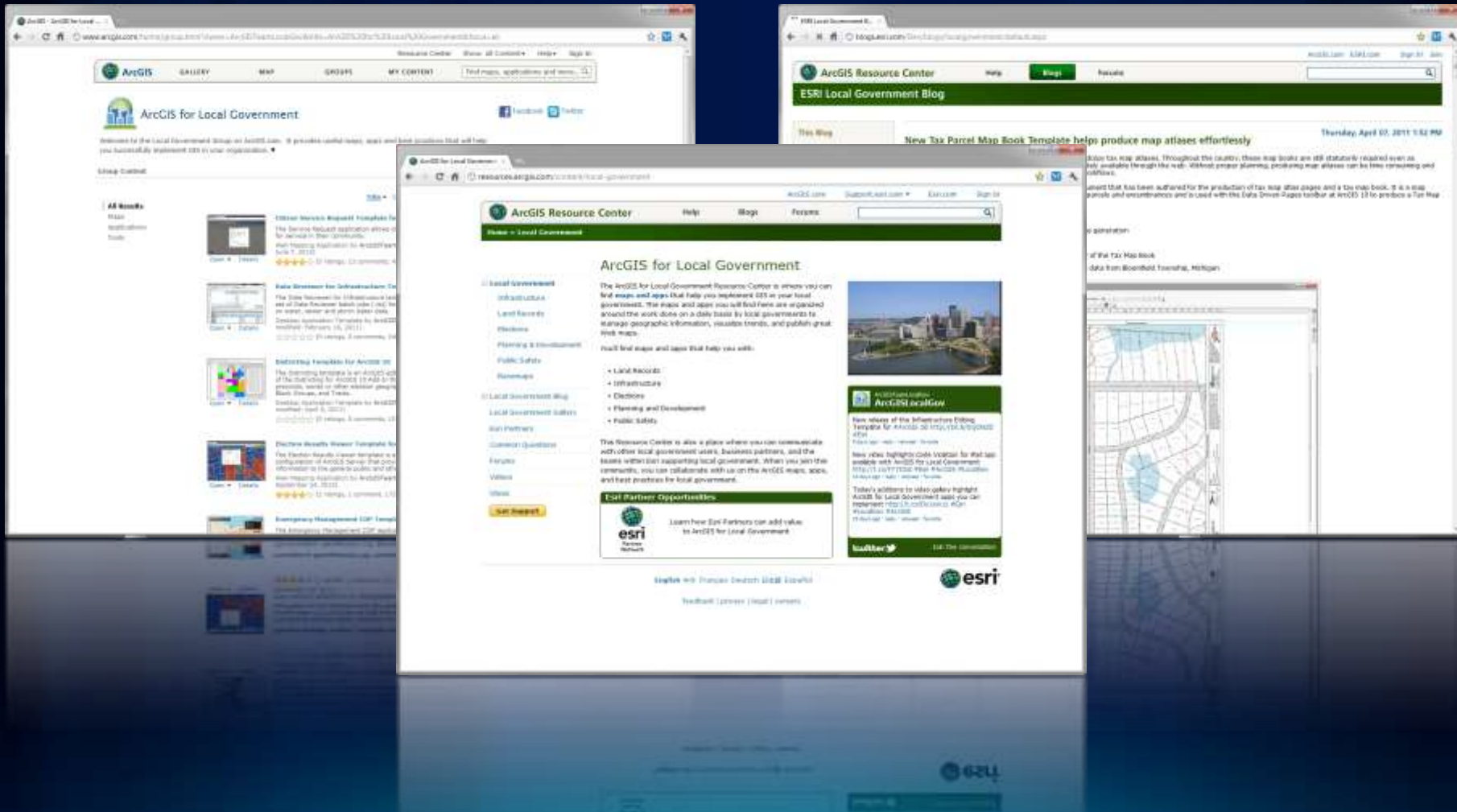
Communicating directly  
with stakeholders  
and enlisting their  
participation





# Local Government Community

*An online community where Local Government users and partners can collaborate*



# Local Government Maps and Apps (Demo)

land records



planning  
development



transportation



public works



public health



elections  
voting



public safety

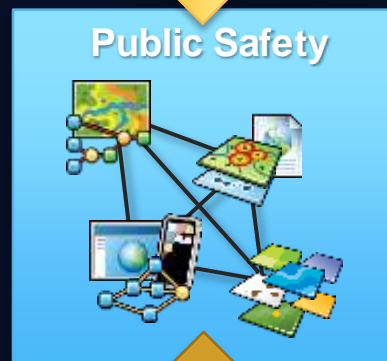
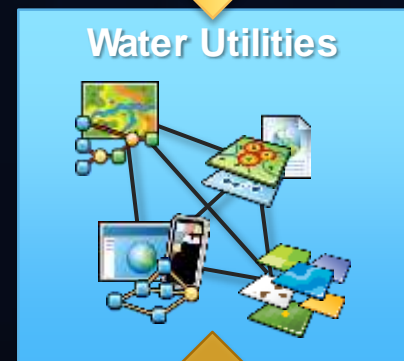
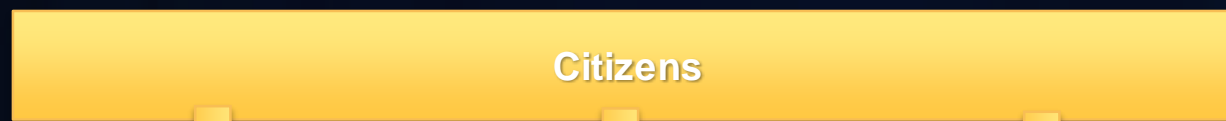


recreation  
conservation

# A System View

## Deploying ArcGIS for Local Government

Access from Maps and Apps website



- Mobile Apps
- Web Apps
- Printed Maps

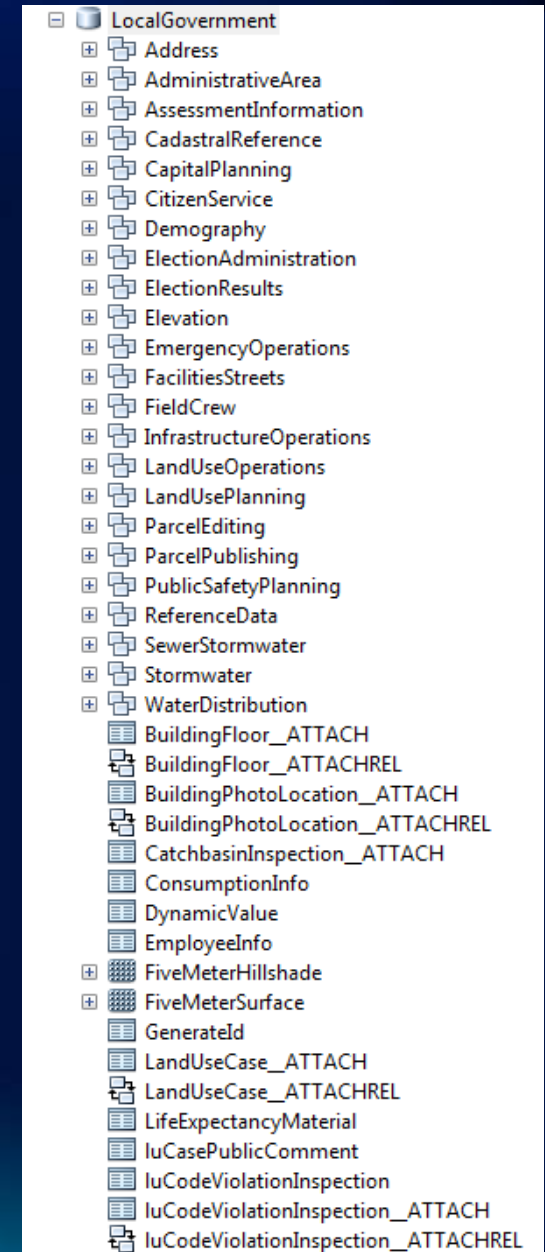


- Centralized Information Model
- Standard base maps
- Common Feature / Map Services

Access from ArcGIS.com

# Local Government Information Model

- **Supports maps and apps**
  - Known local government requirements
  - Easy to adopt and extend
- **Fully documented**
  - Features, layers and packages
- **Central repository, organized around thematic content and logical permission model**
- **Organized access/maintenance patterns**
  - GDB replication, layers and services
- **Safe FME support (coming this summer)**



# Implementing ArcGIS for Local Government

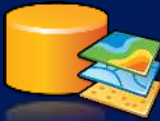
*Getting started is quite easy*



**Identify business priorities**



**Identify business requirements**



**Migrate data to information model**



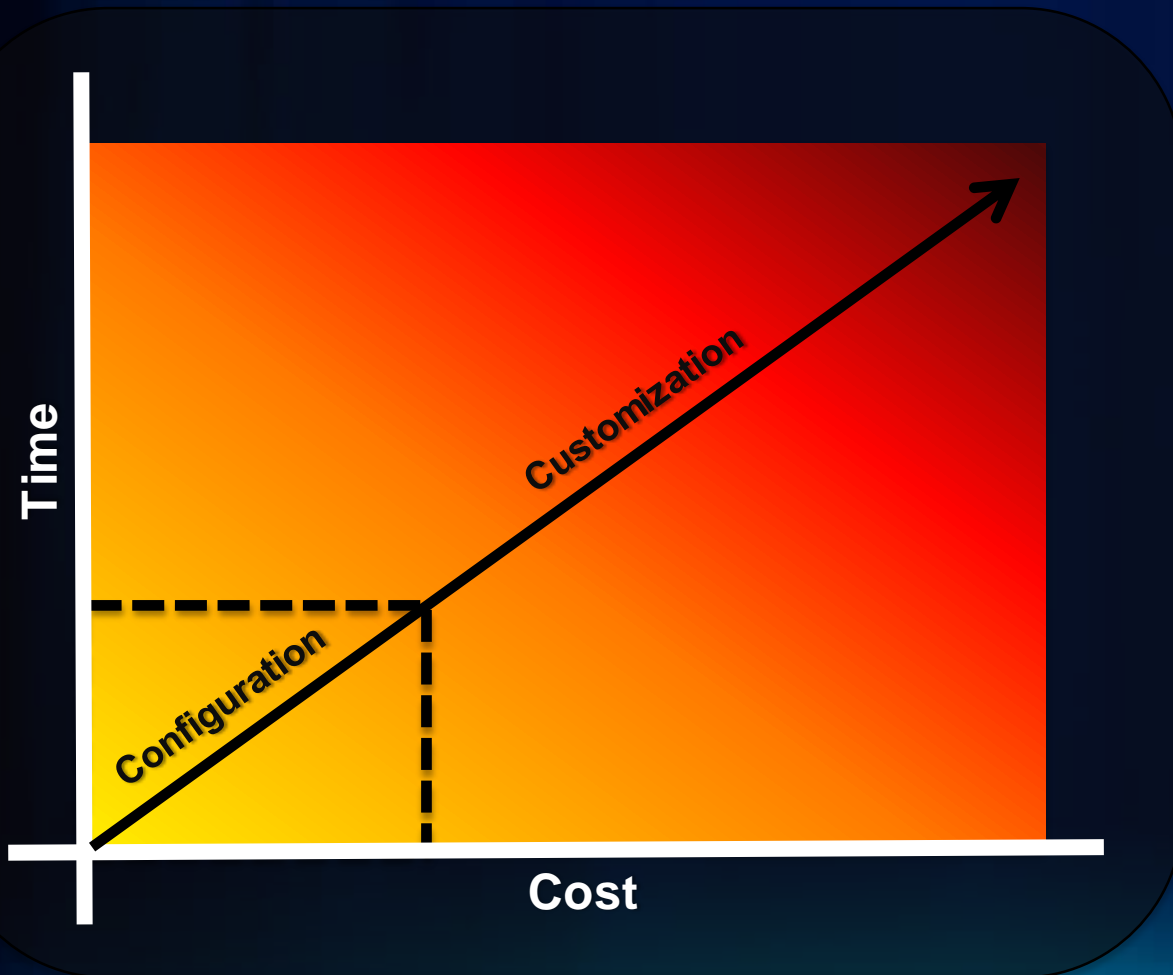
**Publish your Maps**



**Configure and deploy the apps**

# Configure vs. Customize

*Reduce cost, time and risk*



## Benefits

- Implement quickly
- Easy to add new features
- Simple to maintain
- Easy to extend

*.....your feedback affects future releases*

# What's Next

## *Additional maps and apps*

- **Public Works / Water Utilities**
  - Stormwater Assessment
  - Sign Inspection for iOS
  - Snow Response
- **Planning & Development**
  - Address Maintenance
  - Community Planning
  - Parks and Recreation Finder
  - Well / Septic Permitting
  - Operations Dashboard
- **Land Records**
  - Operations Dashboard
  - Tax Parcel Viewer (v.2)
- **Elections**
  - Voter Registration
- **Public Safety**
  - Flood Response / Management
  - Severe Weather Siren Management
  - EM Maps
  - Hydrant Map Book
  - Pre-Fire Planning
  - Fire Incident Command
  - Fire Risk Assessment
  - Crime Analysis
  - EM COP (v.2)
- **Constituent Engagement**
  - Service Request for HTML 5
  - Community Service Catalog
- **Management**
  - Executive Dashboard
  - Transparency

# What's Next

## *Productizing the ArcGIS for Local Government system*

- **Quarterly release schedule**
- **Online Help documentation**
- **On-premise offering**
  - **Simple to install and configure**
- **Cloud offering**
  - **Synchronized w/ 10.1 Release**
- **Complimentary Partner offerings**
  - **ArcGIS for Local Government Partner Specialty**



# Summary

- **Our Goals**
  - **Deliver a “local government GIS” that enables your success**
  - **Evolve and grow the collection of apps**
  - **Provide a platform for partners to deploy their solutions**
- **We want your participation and involvement**
  - **Download the maps and apps**
  - **Provide feedback on existing content**
  - **Identify opportunities for new content**

# Questions

*Please fill out your surveys  
[www.esri.com/sessionevals](http://www.esri.com/sessionevals)*



**@ArcGISLocalGov**



**[arcgisteamlocalgov@esri.com](mailto:arcgisteamlocalgov@esri.com)**



esri